

The **GIRA SOLE**



The GIRA SOLE series recessed luminaire has been designed to be the most advanced in-grade LED luminaire available.

The Beghelli LUCE LED light engine is up to five times more efficient than conventional lamps at 70% of its initial light output with an estimated life of 100,000 hours.

GIRA SOLE is available with white, RGB color mixing or custom color LED light engines.

The lens is available in narrow, medium or wide beam distribution

The housing is fabricated from high-strength machined aluminum alloy with an anodized or hard anodized finish.

The GIRA SOLE has a gasketed, impact resistant recessed lens and clear optics for increased efficiency and performance.

Robust design for durability while allowing maximum heat dissipation

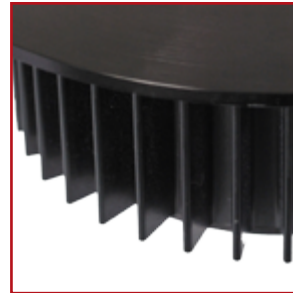
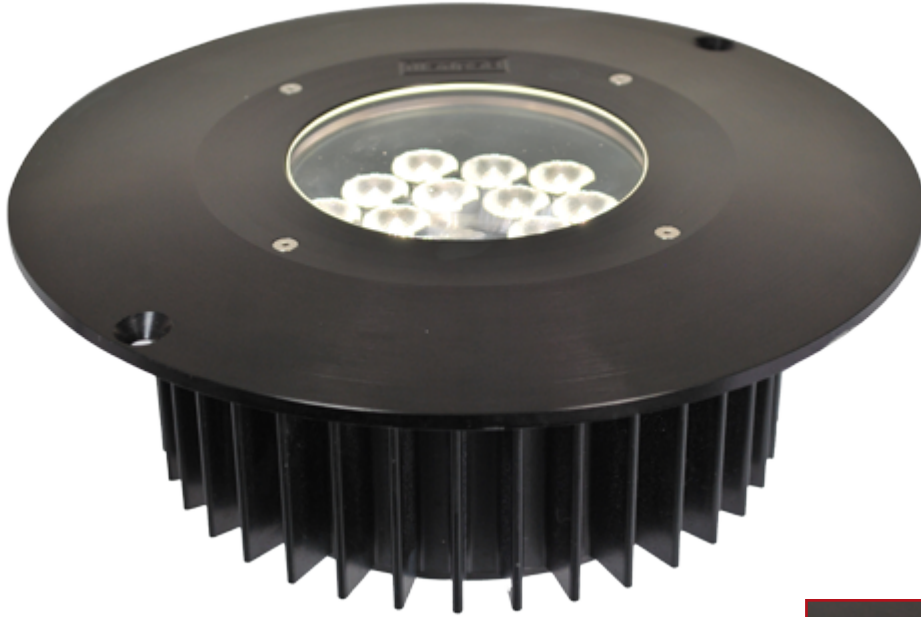
The recessed / in-grade design is perfect for use in landscape applications, walkways, corridors, stairwells, restaurants and retail.

The GIRA SOLE



GSLED

GIRA SOLE



• The GIRA SOLE is an in-grade luminaire that enhances any landscape or exterior facade. This long lasting luminaire utilizes the latest technology: a high-output LED light engine.



• The energy efficient LED light engine is available in RGB and allows DMX-512 control of colour and intensity.

• The GIRA SOLE is designed to retrofit existing enclosures or can be ordered with an in-ground enclosure. The tapered top plate draws moisture away from the lens keeping it clean and clear for superior light output.

• The GIRA SOLE is constructed from aluminum alloy, with an anodized finish. A hard anodized finish is available for marine, high traffic or harsh environment use. All hardware is stainless steel. The perforated top plate is optional.

